

THE GARAGE THAT LASTS

BEAUTIFUL DESIGN

DURABLE

SUPERIOR QUALITY

BUILT TO LAST

Wall Mounted Cabinets

Our **off-the-floor** cabinet mounting makes cleaning easy and protects your cabinets and belongings from water, debris and pests.

OURS



THEIRS



Competitors use kick plates and support legs which can lead to water damage, insect nesting and cleaning issues.

Durable Shelves

We use **one-inch thick**, thermo infused shelves with a load-bearing capacity of 100 pounds. Our shelves are stain resistant and will not bow or crack.

OURS



THEIRS



Other companies use low density, unprotected fiberboard which stains easily and can buckle and crack under heavy weight.

Quality Construction

Our 3/4 inch thick commercial grade cabinet construction will not chip, warp, flake or disintegrate. **We guarantee it for life.** Period.

OURS



THEIRS



Cheaper materials fall apart over time. Peeling edge banding, joint separation, cracking, chipping and warping are common problems.

Fully Integrated Backs

All of our garage systems are installed with **fully integrated backs** which strengthens the cabinets and prevents dirt and insects from entering.

OURS



THEIRS

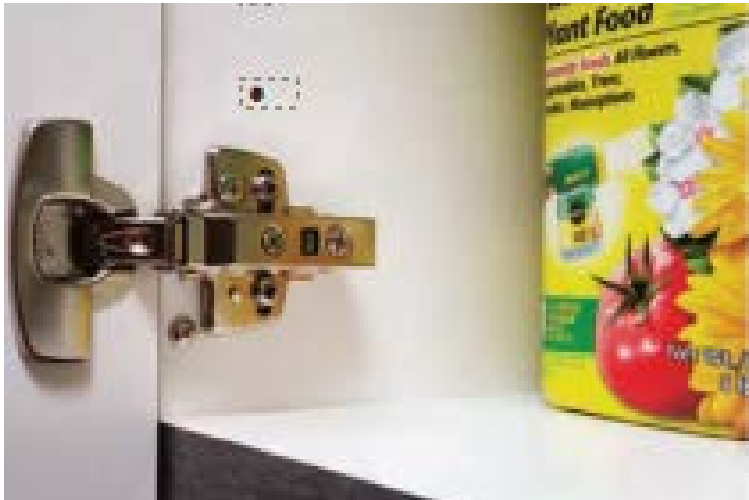


Lower-priced competitors use thick butt-joined backs or no backs at all which compromises strength and creates gaps.

Quality Hardware

Our interior-mounted, fully concealed, **soft closing** steel hinges allow doors to swing open 110 degrees providing easier access to belongings.

OURS

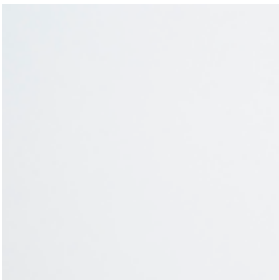


THEIRS



Other companies use low-end hardware which is unsightly and doesn't stand up against normal use and environmental hazards.

Cabinet Color Choices



White



Slate



Silver



Bronze



Pewter



Coco



Maple



Lava



Basalt